

BERLIN- WILMERSDORF

DARMSTÄDTER 7

FLOOR PLAN

UNIT 11

02/06

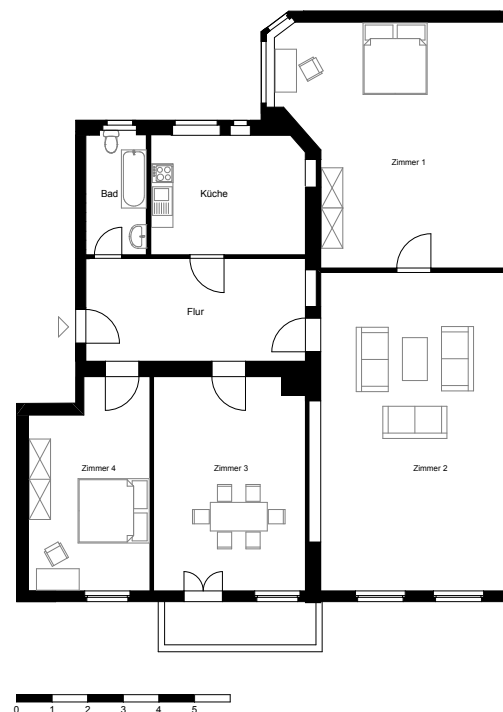
ROOMS	3
LIVING AREA	90.01 m ²
LOCATION	1st floor
BALCONY/TERRACE	yes
LIFT	no
STATE	in need of renovation
STATUS	vacant
PRICE PER SQUARE METRE	4,900.00 €
HOUSING BENEFIT	441,000.00 €
COMMISSION ON PURCHASE PRICE	7,14% incl. statutory VAT
YEAR OF CONSTRUCTION	1913
ENERGY CERTIFICATE TYPE	consumption pass
ENERGY RATING	77 KWH / (m ² *p.a.)
TYPE OF HEATING/ENERGY SOURCE	central/district heating



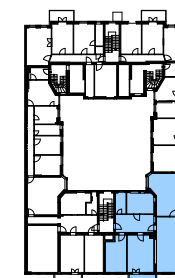
UNIT 23

03/06

ROOMS	4
LIVING AREA	164,15 m ²
LOCATION	4th floor
BALCONY/TERRACE	yes
LIFT	yes
STATE	in need of renovation
STATUS	rented
RENT	862,44 €
PRICE PER SQUARE METRE	5,250.00 €
PURCHASE PRICE	861,787.50 €
COMMISSION ON PURCHASE PRICE	7,14% incl. statutory VAT
YEAR OF CONSTRUCTION	1913
ENERGY CERTIFICATE TYPE	consumption pass
ENERGY RATING	77 KWH / (m ² *p.a.)
TYPE OF HEATING/ENERGY SOURCE	central/district heating

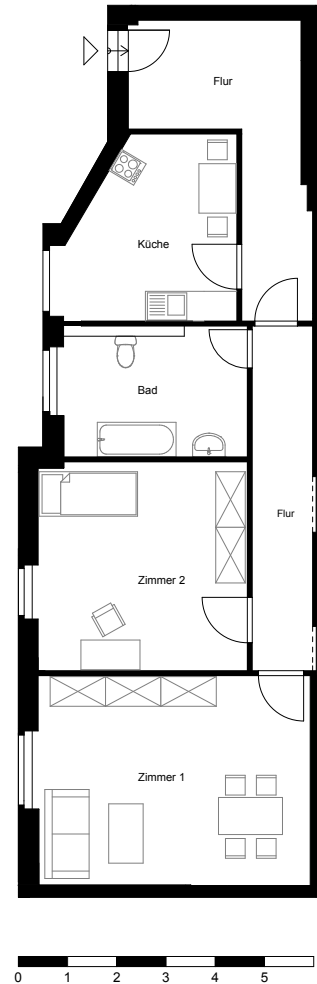


Geschossplan: 4. OG

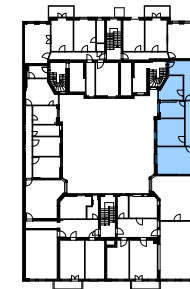


UNIT 27

ROOMS	2
LIVING AREA	80,16 m ²
LOCATION	4th floor
BALCONY/TERRACE	no
LIFT	yes
STATE	well-kept
STATUS	vacant
PRICE PER SQUARE METRE	4,500.00 €
PURCHASE PRICE	360,720.00 €
COMMISSION ON PURCHASE PRICE	7,14% incl. statutory VAT
YEAR OF CONSTRUCTION	1913
ENERGY CERTIFICATE TYPE	consumption pass
ENERGY RATING	77 KWH / (m ² *p.a.)
TYPE OF HEATING/ENERGY SOURCE	central/district heating



Geschossplan: 4. OG



The content of these documents provides general information. We may modify and supplement the information presented here at any time. Floor plans and measures featured in these documents are preliminary. The measures presented, in particular concerning the size of living space, are approximate measures. Within the realm of the building permit, we reserve the right, to make admissible amendments. Floor plans and measures, as well as size, number, layout and design of the windows can therefore deviate from the images in these documents and may vary due to structural adjustments. Only the condition after construction is decisive. Equally, the respective floor plans and measures within the different floors may deviate from each other. The illustrations of the design, the furnishings and facilities of the rooms, the house technology, devices and other objects serve explanatory services only. No warranties or indication of quality follows from the illustrations on this website. The illustrations in these documents serve advertising purposes only. They do not contain an offer to enter into an agreement. Texts, images and graphics contained in these documents are protected by copyright. The reproduction, diversification or other usage of content or data, in particular the usage of texts, parts of texts or image material as well as the utilization of the logo without the prior written consent of the respective right's owner are prohibited.

Address

David Borck
Immobilien-gesellschaft mbH
Knesebeckstrasse 33 – 34
10623 Berlin

Phone

Phone +49 (0)30 887 742 50
Fax +49 (0)30 887 742 525

Mail

service@david-borck.de

Authorized to represent
Caren Rothmann and David Borck

District Court of Berlin-Charlottenburg
HRB 127328 B

Supervisory authority

District Office Berlin
Charlottenburg-Wilmersdorf of Berlin,
10617 Berlin
Phone +49 309 029 10
Fax +49 309 029 146 66

We are looking forward to meeting you!

